

MANDATORY DISCLOSURE

1) Name & Address of the Institution:

MUSIRI INSTITUTE OF TECHNOLOGY POLYTECHNIC COLLEGE

Annai Nagar, Thuraiyur Main Road,

M.Pudupatti(P.O)

Musiri Taluk,Trichy District -621 211

Phone:9994961935

e-mail : mitpolytech@gmail.com

Website: www.mitpolytechnic.com

2) Name and address of the Trust

SWAMY AYYAPPAN EDUCATIONAL TRUST

7/9, Sri Renukadevi Nagar,

Musiri-621211

Phone:9965359546

E-mail : mitpolytech@gmail.com

3) Name and Address of the Principal

Er. S. RANJITHKUMAR,

7/446, Panamthoppu,

Musiri – 621 211

Phone: 9944110972

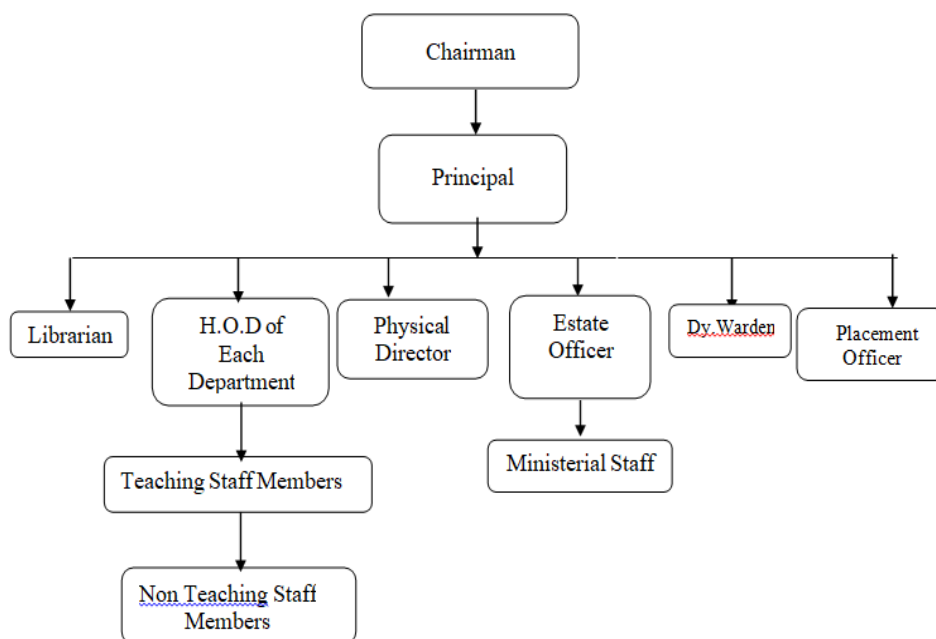
E-mail : ks.ranjith07@gmail.com

4) Name of the affiliating University

DIRECTORATE OF TECHNICAL EDUCATION, CHENNAI

5) Governance

Organizational Chart



| | | |
|--|---|-----|
| Grievance Redressal mechanism for Faculty, staff and students | : | Yes |
| Establishment of Anti Ragging Committee | : | Yes |
| Establishment of Online Grievance Redressal Mechanism | : | Yes |
| Establishment of Grievance Redressal Committee in the Institution and Appointment of OMBUDSMAN by the University | : | Yes |
| Establishment of Internal Committee (IC) | : | Yes |
| Establishment of Committee for SC/ST | : | Yes |
| Internal Quality Assurance Cell | : | Yes |
| Equal Opportunity facilities Cell | : | Yes |

6) Programmes

| S.No | Name of the Programme (Diploma) | Accrediation Status | Applied for Accrediation |
|------|---|---------------------|--------------------------|
| 1 | Civil Engineering | No | No |
| 2 | Mechanical Engineering | No | No |
| 3 | Automobile Engineering | No | No |
| 4 | Agricultural Engineering | No | No |
| 5 | Electrical and Electronics Engineering | No | No |
| 6 | Electronics and communication Engineering | No | No |
| 7 | Computer Engineering | No | No |
| 8 | Paper Technology | No | No |

| S.No | Name of the Programme (Diploma) | No. of Seats | Duration (In years) | Cut off Marks (out of 100) | Fees approved by state govt | Campus Placement | |
|------|--|--------------|---------------------|----------------------------|-----------------------------|-----------------------|-----------------------|
| | | | | | | Max. Salary Per Annum | Min. Salary Per Annum |
| 1 | Civil Engineering | 30 | 3 | 35 | 35,000/- | 1,50,000 | 2,50,000 |
| 2 | Mechanical Engineering | 90 | 3 | 35 | 35,000/- | 1,50,000 | 2,50,000 |
| 3 | Automobile Engineering | 30 | 3 | 35 | 35,000/- | 1,50,000 | 2,50,000 |
| 4 | Agricultural Engineering | 30 | 3 | 35 | 35,000/- | NA | NA |
| 5 | Electrical and Electronics Engineering | 60 | 3 | 35 | 35,000/- | 1,50,000 | 2,50,000 |
| 6 | Electronics and communication Engg. | 30 | 3 | 35 | 35,000/- | 1,50,000 | 2,50,000 |
| 7 | Computer Engineering | 30 | 3 | 35 | 35,000/- | NA | NA |
| 8 | Paper Technology | 60 | 3 | 35 | 35,000/- | NA | NA |

Foreign collaboration : NIL

7) Faculty

| S.No | Name of the Programme (Diploma) | Permanent Faculty | Adjunt Faculty | Permanent Faculty: Student Ratio |
|------|---|-------------------|----------------|----------------------------------|
| 1 | Civil Engineering | 4 | 0 | 22 |
| 2 | Mechanical Engineering | 13 | 0 | 21 |
| 3 | Automobile Engineering | 6 | 0 | 15 |
| 4 | Agricultural Engineering | 4 | 0 | 22 |
| 5 | Electrical and Electronics Engineering | 10 | 0 | 18 |
| 6 | Electronics and communication Engineering | 6 | 0 | 15 |
| 7 | Computer Engineering | 3 | 0 | 10 |
| 8 | Paper Technology | 6 | 0 | 20 |

8) Profile of the Principal

Name : RANJITHKUMAR S

Date of Birth : 14 July 1988

Unique ID : 1-497456251

Educational Qualifications : ME.,

Work Experience

Teaching : 15 Years
Industry : Nil
Others : Nil

Area of Specialization : Electronics and communication Engineering

Courses taught at : Diploma

Research guidance (Number of Students) : Nil

No. of papers published in National /International Journals/Conferences : 01

Master : Completed

Ph.D. : Nil

9) Fee

Scholarship offered by the Institution

| Name of the student | Class | Duration (Years) | Amount /Year (Rs.) |
|---------------------|----------------|------------------|--------------------|
| AKASH R | DME – I Year | 3 | 3000 |
| KUMARAVEL M | DCE – I Year | 3 | 15000 |
| KAVINESH P | DME – I Year | 3 | 4000 |
| GIRIDHARAN K S | DPT - I Year | 3 | 35000 |
| JEEVAN PERUMAL S | DME – I Year | 3 | 4000 |
| SANKAVI K | DME – II Year | 2 | 15000 |
| GOPALAKRISHNAN M | DME – II Year | 2 | 3000 |
| KARTHICK B | DME – II Year | 2 | 3000 |
| SAKTHIKUMAR B | DME – II Year | 2 | 3000 |
| PUNNIYARASU S | DME – II Year | 2 | 3000 |
| SURIYA P | DAE – II Year | 2 | 3000 |
| AYYAPPAN R | DEEE - II Year | 2 | 3000 |
| KIRUBAKARAN T | DPT - II Year | 2 | 3000 |
| NAVEEN S | DME - III Year | 1 | 3000 |
| LOGANATHAN A | DME - III Year | 1 | 3000 |
| MATHAVAN S | DME - III Year | 1 | 15000 |
| ANBUSELVAN R | DAE – III Year | 1 | 15000 |

10) Admission

| S.No | Name of the Programme (Diploma) | Seats Sanctioned | Admissions 2021-22 | Admissions 2022-23 | Admissions 2023-24 | |
|------|--|------------------|--------------------|--------------------|--------------------|-------------|
| | | | | | Govt. Quota | Mgmt. Quota |
| 1 | Civil Engineering | 30 | 8 | 7 | 9 | 0 |
| 2 | Mechanical Engineering | 90 | 75 | 68 | 72 | 4 |
| 3 | Automobile Engineering | 30 | 12 | 7 | 15 | 0 |
| 4 | Agricultural Engineering | 30 | NA | 2 | 5 | 0 |
| 5 | Electrical and Electronics Engineering | 60 | 39 | 40 | 57 | 5 |
| 6 | Electronics and communication Engg. | 30 | 14 | 14 | 10 | 0 |
| 7 | Computer Engineering | 30 | NA | NA | 24 | 9 |
| 8 | Paper Technology | 60 | NA | 20 | 21 | 0 |

11) Admission Procedure

- The allotment of seats for Tamil Nadu Polytechnic admission will be based on candidates' marks in Class 10th or Secondary School Examination.
- Moreover, there is no age limit for Tamil Nadu Polytechnic admission.
- The authorities will not conduct any entrance test for Tamil Nadu Polytechnic admission.
- Candidates will be able to apply for admission in in both online and offline modes.

12) Criteria and Weightages for Admission

- Once the application process is completed, the merit list will release based on candidates score.
- Based on merit list, candidates will be called for the counselling and seat allotment process.

13) Information of Infrastructure and Other Resources Available

| | | |
|--|---|-------------------|
| Number of Class Rooms and size of each | : | 14 (66 .15 Sq.m) |
| Number of Tutorial rooms and size of each | : | 5 (33 Sq.m) |
| Number of Laboratories and size of each | : | 34 (70.2 Sq-m) |
| Number of Computer Centres with capacity of each | : | 1 (165.3 Sq-m) |
| Central Examination Facility, Number of rooms and capacity of each | : | Available |
| Online examination facility (Number of Nodes, Internet band width, etc.) | : | Available |
| Barrier Free Built Environment for disabled and elderly persons | : | Yes |
| Fire and Safety Certificate | : | Yes |
| Hostel Facilities | : | Yes |
| Number of Library books | : | 13245 |
| Journals | : | 30 |
| List of online National/International Journals subscribed | : | |

| | | |
|--|---|------------|
| National Digital Library (NDL) subscription details | : | 6825952482 |
| List of Major Equipment/Facilities in each Laboratory/Workshop | : | |
| <p>MATERIAL TESTING AND CONSTRUCTION PRACTICE LAB</p> <ol style="list-style-type: none"> 1. IZOD/CHARPY IMPACT TESTING MACHINE 2. DEFLECTION BEAM APPARATUS 3. VICAT NEEDLE APPARATUS 4. SPRING TESTING MACHINE 2000KG DIGITAL 5. DIGITAL BALANCE 5KG CAPACITY 6. DIGITAL BALANCE 300KG CAPACITY 7. DENSITY BASKET 8. MOTOR CUBE VIBRATOR 9. EXTENSO METER 10. DOUBLE SHEAR APPARATUS 11. UNIVERSAL TESTING MACHINE MODEL KIT 40 TONNE 12. 1000 KN COMPRESSION TESTING MACHINE 13. OVEN 455X455X455 14. LIQUID LIMIT APPARATUS 15. PLASTIC LIMIT APPARATUS 16. SAND POURING CYLINDER SMALL 17. PROCTOR COMPACTION MOULD WITH RAMMER 18. DIRECT SHEAR APPARTUS HAND OPERATED 19. AGGREGATE IMPACT TESTING MACHINE 20. AGGREGATE CRUSHING MACHINE 21. FIELD DENSITY KIT CORE CUTTER 22. WATER BATH 23. TORSION TESTING MACHINE 24. ROCKWELL AND BRINELL HARDNESS TESTING MACHINE 25. JACKSON TURBITIMETER 26. DEVELS ATTRITION TESTING MACHINE 27. CEMENT AUTOCLAVE 28. BLAINS AIR PERMEABILITY APPARATUS 29. TILE FLEXURE TESING MACHINE 30. SLUMP CONE APPARATUS 31. FINE AGGREGATE TEST SIEVE BRASS LID AND PAN 32. COARSE AGGREGATE TEST SIEVE LID AND PAN 33. CUBE MOULD 70.6 MM 34. CUBE MOULD 150 MM 35. 90 MICRON SIEVE WITH LID AND PAN | | |

FLUID MECHANICS AND HYDRAULICS LAB

- 36. BERNOULLIS THEOREM APPARATUS
- 37. VENTURIMETER AND ORIFICEMETER TEST APPARATUS
- 38. PIPE FRICTION APPARATUS
- 39. CENTRIFUGAL PUMP TEST APPARTUS
- 40. ORIFICE AND MOUTHPIECE TANK AAPPARATUS
- 41. PELTON TURBINE TEST APPARATUS
- 42. FRANCIS TURBINE TEST APPARATUS

SURVEYING PRACTICE LAB

- 43. MEASURING CHAIN
- 44. THEODOLITE
- 45. DUMPY LEVEL
- 46. PRISMATIC COMPASS
- 47. AUTO LEVEL
- 48. SURVEYORS COMPASS
- 49. TILTING SURVEY UMBRELLA
- 50. GPS ETERX VISTA
- 51. TOTAL STATION

MACHINE SHOP (SPECIAL MACHINES)

- 52. 41/2 VEEKAY BRAND LATHE WITH STANDARD ACCESSORIES
- 53. CENTRE LATHE
- 54. POWER HACKSAW MACHINE
- 55. SLOTTING MACHINE
- 56. HORIZONTAL MILLING MACHINE
- 57. SURFACE GRINDING MACHINE
- 58. TOOL & CUTTER GRINDING MACHINE
- 59. CYLINDRICAL GRINDING MACHINE
- 60. SHAPING MACHINE
- 61. PLANNING MACHINE
- 62. RADIAL DRILLING MACHINE
- 63. BOSCH CUTTING MACHINE
- 64. CNC TRAINER LATHE MACHINE
- 65. CNC TRAINER MILLING MACHINE
- 66. 1/2 DRILLING MACHINE WITH MOTORS ,CHUCK
- 67. 1/2 HP BENCH GRINDING MACHINE

THERMODYNAMICS LABORATORY

- 68. SINGLE CYLINDER 4 STROKE PETROL ENGINE TEST RIG WITH ELECTRICAL LOADING
- 69. SINGLE CYLINDER 4 STROKE DIESEL ENGINE TEST RIG WITH ROPE BRAKE DYNAMO METER
- 70. MULTI CYLIDER 4 STROKE PETROL ENGINE TEST RIG WITH ROPE BRAKE DYNAMO METER

71. ACTUAL CUT SECTION MODEL OF 4 STROKE DIESEL ENGINE
72. ORSAT APPARATUS WITH CHEMICALS
73. REDWOOD VISCOMETER
74. SAYBOLT VISCOMETER
75. PENSKY MARTEEN FLASH & FIRE POINT APPARATUS
76. CLEVELAND FLASH & FIRE POINT APPARATUS
77. SINGLE CYLINDER SINGLE STAGE AIR COMPRESSOR TEST RIG
78. ACTUAL CUT SECTION MODEL OF 2 STROKE & 4 STROKE PETROL ENGINE
79. THERMAL CONDUCTIVITY BY GUARDED HOT PLATE APPARATUS (SOLID)
80. REFRIGERATION CYCLE TEST RIG (CLOSED TYPE)

PROCESS AUTOMATION PRACTICAL

81. PLC TRAINER KIT
82. TWO CYLINDER ONE MOTOR TRAINER KIT
83. MOTOR, TWO PYRAMID LED INDICATOR TRAINER KIT

WORK SHOP (FOUNDRY , WELDING)

84. WELDING TRANSFORMER 3 PHASE
85. WELDING TRANSFORMER SINGLE PHASE

MECHANICAL INSTRUMENTATIONS LAB

86. MEASURING OF NEGATIVE PRESSURE USING BOURDEN GAUGE
87. WATER FLOW MEASUREMENT USING ROTAMETER
88. MEASURING OF NEGATIVE PRESSURE USING BOURDEN GAUGE
89. LEVEL MEASUREMENT USING CAPACITIVE TRANSDUCER
90. DISPLACEMENT MEASUREMENT USING LVDT
91. TEMPERATURE MEASUREMENT KIT
92. SPEED MEASUREMENT BY STROBOSCOPE
93. MEASUREMENT OF WEIGHT BY LOAD CELL
94. MEASUREMENT OF STRAIN USING STRAIN GAUGE
95. MEASUREMENT OF TORQUE

EQUIPMENTS

96. CYLINDER RE-BORING MACHINE
97. HYDRAULIC PRESS
98. VALVE RE-FACING MACHINE
99. HORIZONTAL LINE BORING MACHINE
100. VERTICAL HONING MACHINE
101. WHEELER BALANCER
102. NOZZLE TESTER
103. PAINT SPARY GUN
104. EXHAUST GAS ANALYSER
105. WATER WASH EQUIPMENT
106. RADIATOR PRESSURE CAP TESTER
107. DEMONSTRATION BOARD OF ELECTRONIC IGNITION SYSTEM
108. WORKING MODEL OF AUTOMATIC REALY

109. EXPERIMENT MODEL OF DIFFERENT TYPES OF SENSORS SYSTEM
110. FUEL AND TEMPERATURE GAUGE
111. TRANSMISSION JACK
112. ORSAT APPARATUS
113. BATTERY LOAD TESTER
114. BUCK CONVERTER
115. BATTERY CHARGING UNIT
116. INVERTER TRAINER KIT
117. BLDC MOTOR KIT
118. WIRING HARNESS KIT
119. E- BICYCLE KIT
120. E- BIKE KIT 48V
121. E- VEHICLE BATTERY
122. E- RICKSHAW KIT

TOOLS

123. SOCKET SET

VEHICLE PARTS AND COMPONENTS

124. GEAR BOX- SYNCHROMESH TYPE
125. GEAR BOX- CONSTANT TYPE
126. GEAR BOX- EPICYCLIC TYPE
127. STEERING GEAR BOX 3 TYPES
128. DIFFERENTIAL REAR AXLE
129. REAR AXLE
130. AUTO RICKSHAW
131. MOTOR BIKE
132. 4 WHEEL DRIVE MECHANISM WITH GEAR BOX
133. MOTOR BIKE (4S GLOBAL)
134. CRDI
135. MPFI

ELECTRICAL MACHINES LAB

136. DC SHUNT GENERATOR (5HP 220 V) WITH DC SHUNT MOTOR
137. DC SERIES GENERATOR (5HP 220 V) WITH DC SHUNT MOTOR
138. DC SERIES GENERATOR (3HP 220 V) WITH DC SHUNT MOTOR
139. ALTERNATOR (3 KVA) COUPLED WITH DC SHUNT MOTOR
140. ALTERNATOR (2 KVA) COUPLED WITH DC SHUNT MOTOR
141. 5 HP DC SERIES MOTOR WITH LOADING ARRANGEMENT AND STARTER
142. 5 HP DC SHUNT MOTOR WITH LOADING ARRANGEMENT AND STARTER
143. 220 V DC SHUNT MOTOR WITH LOADING ARRANGEMENT
144. 5 HP DC COMPOUND MOTOR WITH LOADING ARRANGEMENT AND STARTER
145. 3 HP SLIPRING INDUCTION MOTOR WITH LOADING ARRANGEMENT
146. 5 HP SCRAMBLER CAGE INDUCTION MOTOR WITH LOADING ARRANGEMENT

- 147. 2 HP CAPACITOR TYPE INDUCTION MOTOR WITH LOADING ARRANGEMENT
- 148. 3 HP, 3 KW SYNCHRONOUS MOTOR COUPLED WITH DC SHUNT MOTOR
- 149. 3 HP, 3 PHASE TWO SPEED MOTOR
- 150. 15A, 3PH, AUTO TRANSFORMER
- 151. SYNCHRONIZING PANEL
- 152. 3KWH METER
- 153. 5 KW, 1 PHASE RESISTIVE LOAD
- 154. 2KVA, 1PH, TRANSFORMER
- 155. 3 PHASE TRANSFORMER
- 156. 1 HP VARIAC 20 A
- 157. 100 A RECTIFIER
- 158. 5 KW, 1 PHASE INDUCTIVE LOAD
- 159. EARTH TESTER WITH HAND DRIVEN TYPE
- 160. EARTH MEGGAR
- 161. CAPACITOR BANK
- 162. 15A, 1PH, AUTO TRANSFORMER

CONTROL OF ELECTRICAL MACHINES LAB

- 163. 3PHASE, 10A, ROTOR RESISTANCE STARTER
- 164. 3 POINT STARTER
- 165. 3PHASE, 10A, ROTOR RESISTANCE STARTER
- 166. STEPPER MOTOR DRIVER KIT
- 167. SERVO MOTOR DRIVER KIT
- 168. 3 HP, 3 PHASE INDUCTION MOTOR WITH END CONNECTION
- 169. EXIDE 6 EL 150 AH TUBULAR BATTERY
- 170. THERMAL OVERLOAD RELAY WITH KIT
- 171. STAR DELTA STARTER USING PLC KIT
- 172. ROTOR RESISTANCE STARTER USING PLC KIT
- 173. PLC BASED FORWARD / REVERSE INCH TRAINER KIT
- 174. ROTARY HAMMER
- 175. SEQUENTIAL OPERATION OF SOLENOID VALVE AND A MOTOR
- 176. PLC KIT
- 177. JOGGING CONTROL CIRCUIT
- 178. DYNAMIC BRAKING KIT
- 179. SEMI AUTOMATIC STAR / DELTA STARTER
- 180. AUTOMATIC STAR / DELTA STARTER
- 181. ROTOR RESISTANCE KIT
- 182. TWO SPEED TWO WINDING KIT
- 183. FOR / REV / INCH KIT

POWER ELECTRONICS LAB

- 184. LINE SYNCHRONISED RAMP UJT TRIGGER CIRCUIT
- 185. SINGLE PHASE HALF AND FULLY CONTROLLED BRIDGE WITH R LOAD
- 186. LAMP CONTROL CIRCUIT USING DIAC - TRIAC

187. SCR COMMUTATION CIRCUITS
188. BASIC SERIES INVERTER USING SCR
189. SINGLE PHASE PARALLEL INVERTER USING MOSFET
190. DC CHOPPER USING THYRISTOR
191. SINGLE PHASE CYCLO CONVERTER
192. UNIVERSAL MOTOR CONTROL USING TRIAC
193. CLOSED LOOP SPEED CONTROL OF DC MOTOR WITH LOADING ARRANGEMENT
194. MOSFET BASED PWM CHOPPER
195. SINGLE PHASE INVERTER USING MOSFET
196. MULTIPLE SINUSOIDAL PWM INVERTER USING MOSFET
197. SMPS USING MOSFET
198. THREE PHASE HALF / FULL BRIDGE CONVERTER

INSTRUMENTATION LAB

199. ANDERSON BRIDGE (OHM TECH)
200. WHEATSTONE BRIDGE (OHM TECH)
201. SCHERING BRIDGE (OHM TECH)
202. ANDERSON BRIDGE (BARATHI)
203. WHEATSTONE BRIDGE (BARATHI)
204. SCHERING BRIDGE (BARATHI)
205. LVDT TRAINER KIT

COMMUNICATION ENGINEERING LAB

206. PULSE CODE TRAINER & RECEIVER TRAINER KIT
207. FREQUENCY MODULATOR TRAINER
208. MAGNETIC TAPE RECORDER TRAINER
209. CABLE TV DISTRIBUTION TRAINER
210. LOUD SPEAKER TRAINER
211. COLOUR TV TRAINER
212. CCTV MODEL TRAINER
213. DDH TRAINER
214. DVD TRAINER
215. MICROPHONE TRAINER
216. SERIES AND SHUNT EQUALIZER TRAINER
217. DYNAMIC CONE LOUD SPEAKER KIT
218. MOVING COIL MICRO PHONE KIT

INDUSTRIAL ELECTRONICS LAB

219. MULTIPULSE SINE WAVE INVERTER KIT
220. LIFT WORKING MODEL
221. CONVEYOR
222. BASIC SERIES INVERTED CIRCUIT
223. SINGLE PULSE PARALLEL INVERTOR USING MOSFET
224. DC CHOPPER
225. ALLEN BRADLEY MICROLOGIX SERIES TRAINER KIT

MICRO PROCESSOR LAB

- 226. NG PLATINUM ADVANCED TRAINER
- 227. MANGA-8085 BASEDMICROPROCESSOR KIT
- 228. MPEXP06 DC MOTOR SPEED MEASUREMENT
- 229. MPEXP04A STEPPER MOTOR DRIVE CARD

VLSI/EMBEDDED LAB

- 230. UNIVERSAL EMBEDDED TRAINER WITH DAUGHTER BOARD
- 231. UNIVERSAL EMBEDDED TRAINER LPC-2148 KIT
- 232. UNIVERSAL EMBEDDED TRAINER
- 233. DIGITAL IC TESTER KIT

ELECTRONICS LAB

- 234. AMMETER DIGITAL
- 235. AMMETER ANALOG
- 236. VOLTMETER DIGITAL
- 237. VOLTMETER ANALOG
- 238. MULTIMETER
- 239. POWER SUPPLY (0-30V /2 A)
- 240. DUAL TRACE CATHODE RAY OSCILLOSCOPES
- 241. AUDIO FREQUENCY OSCILLATOR
- 242. SERVO VOLTAGE
- 243. STRAIN GAUGE TRAINER
- 244. LVDT TRAINER
- 245. LOAD CELL TRAINER MODULE

PULPING TECHNOLOGY LAB

- 246. BRIGHTNESS TESTER
- 247. FRESHNESS TESTER-CSF
- 248. RAPID SHEET DRIER
- 249. MUFFLE FURNACE
- 250. HANDMADE PAPER MACHINE SETUP
- 251. DEWATERING ROLL
- 252. SPECIAL TYPE STEAMER
- 253. BALL MILL

STOCK PREPARATION AND ALLIED CHEMICAL PRACTICAL

- 254. QUADARNT SCALE
- 255. THICKNESS MICROMETER
- 256. BURSTING STRENGTH PAPER INBULIA PNEUMATICS
- 257. ELMENDER TYPE TEARING STRENGTH TESTER
- 258. TENSILE STREGTH TESTER VERTICLE LOAD AND TENSILE STRIP CUTTER
- 259. BRIGHTHNESS,OPACITY AND FLOW TESTER
- 260. WAX PICK STICKS
- 261. COBB-S TESTER AND COBB-S CIRCULAR CUTTER
- 262. SMOOTHNESS AND POROSITY TESTER

263. PLY BOND TESTER

264. WEIGHT BALANCE ACCURACY 0.001

265. GSM BALANCE WITH TEMPLATE

List of Experimental Setup in each Laboratory/Workshop

:

1. UNIVERSAL TESTING MACHINE MODEL KIT 40 TONNE
2. 1000 KN COMPRESSION TESTING MACHINE
3. AGGREGATE IMPACT TESTING MACHINE
4. AGGREGATE CRUSHING MACHINE
5. ROCKWELL AND BRINELL HARDNESS TESTING MACHINE
6. DEVELS ATTRITION TESTING MACHINE
7. CENTRIFUGAL PUMP TEST APPARTUS
8. PELTON TURBINE TEST APPARATUS
9. FRANCIS TURBINE TEST APPARATUS
10. 41/2 VEEKAY BRAND LATHE WITH STANDARD ACCESSORIES
11. CENTRE LATHE
12. POWER HACKSAW MACHINE
13. SLOTTING MACHINE
14. HORIZONTAL MILLING MACHINE
15. SURFACE GRINDING MACHINE
16. TOOL & CUTTER GRINDING MACHINE
17. CYLINDRICAL GRINDING MACHINE
18. SHAPING MACHINE
19. PLANNING MACHINE
20. RADIAL DRILLING MACHINE
21. BOSCH CUTTING MACHINE
22. CNC TRAINER LATHE MACHINE
23. CNC TRAINER MILLING MACHINE
24. 1/2 DRILLING MACHINE WITH MOTORS ,CHUCK
25. 1/2 HP BENCH GRINDING MACHINE
26. DC SHUNT GENERATOR (5HP 220 V) WITH DC SHUNT MOTOR
27. DC SERIES GENERATOR (5HP 220 V) WITH DC SHUNT MOTOR
28. DC SERIES GENERATOR (3HP 220 V) WITH DC SHUNT MOTOR
29. ALTERNATOR (3 KVA) COUPLED WITH DC SHUNT MOTOR
30. ALTERNATOR (2 KVA) COUPLED WITH DC SHUNT MOTOR
31. 5 HP DC SERIES MOTOR WITH LOADING ARRANGEMENT AND STARTER
32. 5 HP DC SHUNT MOTOR WITH LOADING ARRANGEMENT AND STARTER
33. 220 V DC SHUNT MOTOR WITH LOADING ARRANGEMENT
34. 5 HP DC COMPOUND MOTOR WITH LOADING ARRANGEMENT AND STARTER
35. 3 HP SLIP RING INDUCTION MOTOR WITH LOADING ARRANGEMENT
36. 5 HP SQUIRREL CAGE INDUCTION MOTOR WITH LOADING ARRANGEMENT

| | | |
|--|---|----------------|
| 37. 2 HP CAPACITOR TYPE INDUCTION MOTOR WITH LOADING ARRANGEMENT 38. 3 HP, 3 KW SYNCHRONOUS MOTOR COUPLED WITH DC SHUNT MOTOR 39. 3 HP,3 PHASE TWO SPEED MOTOR 40. 5 KW,1 PHASE RESISTIVE LOAD 41. 5 KW,1 PHASE INDUCTIVE LOAD | | |
| Innovation Cell | : | Yes |
| Social Media Cell | : | Yes |
| Compliance of the Academic Bank of Credit (ABC), applicable to PGCM/ PGDM Institutions and University Departments | : | Not Applicable |
| To upload the respective short video (1-2 min) of Infrastructure and facilities available w.r.t the courses in the website | : | Refer Website |
| Games and Sports Facilities | : | Yes |
| Teaching Learning Process | : | Yes |
| For each Post Graduate Courses: | : | Not Applicable |